

# 2019 FACTBOOK



Carmella Sanchez  
Director of Institutional Research  
505 747.2118  
carmella@nmmc.edu

NORTHERN New Mexico College



Northern New Mexico College is proud to present its tenth annual Fact Book publication. This document is compiled by the Office of Institutional Research. It contains profiles on student enrollment, degree offerings, financial data, and employees. The data in this publication is compiled using the most recent academic school year (fall, spring, and summer terms) and the most recent fall census report. All data is collected and maintained using Banner. The intent of this publication is to provide an accurate and consistent reference for use by various internal and external stakeholders. This effort intends to not only provide quick and easy access to institutional data but also to open-up new ideas and questions.

If you have questions or comments regarding this publication, please feel free to contact us by email at [Carmella@nmmc.edu](mailto:Carmella@nmmc.edu).

Thank you



# Northern New Mexico College

---

## VISION

Northern New Mexico College is a Hispanic- and Native American-serving comprehensive institution that will be recognized nationally for cultural sustainability, quality student learning and developing economically strong communities among diverse populations.

## MISSION

The mission of Northern New Mexico College is to ensure student success by providing access to affordable, community-based learning opportunities that meet the educational, cultural, and economic needs of the region.

---

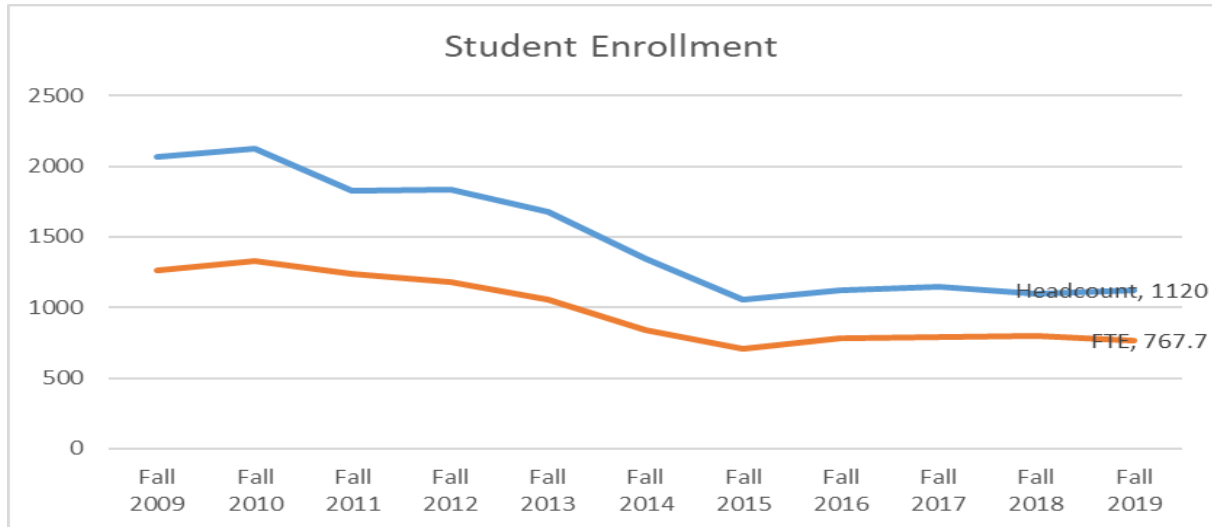
### *Table of Contents*

<i>Student Enrollment</i>	<i>3</i>
<i>Employees</i>	<i>3</i>
<i>Budget</i>	<i>4</i>
<i>Community Service</i>	<i>5</i>
<i>Developmental Studies</i>	<i>6</i>
<i>Credit Enrollment</i>	<i>6</i>
<i>Enrollment Trends</i>	<i>7</i>
<i>Characteristics of Students</i>	<i>8</i>
<i>Residency</i>	<i>10</i>
<i>High School Recruitment</i>	<i>11</i>
<i>Degrees and Majors</i>	<i>12</i>

## Current Facts

### Student Enrollment

Source: Fall 3<sup>rd</sup> Week Enrollment Registrar's Report



## Employees

Human Resources Report (IPEDS Spring 2019)

	Full-Time Faculty (n=42)	Part-Time Faculty (n=42)
White	43%	26%
Black	0	5%
Hispanic	33%	38%
American Indian	0	5%
Asian	14%	2%
Non-Resident Alien	0	0
Unknown/Other	10%	24%
<b>Total</b>	<b>42</b>	<b>42</b>

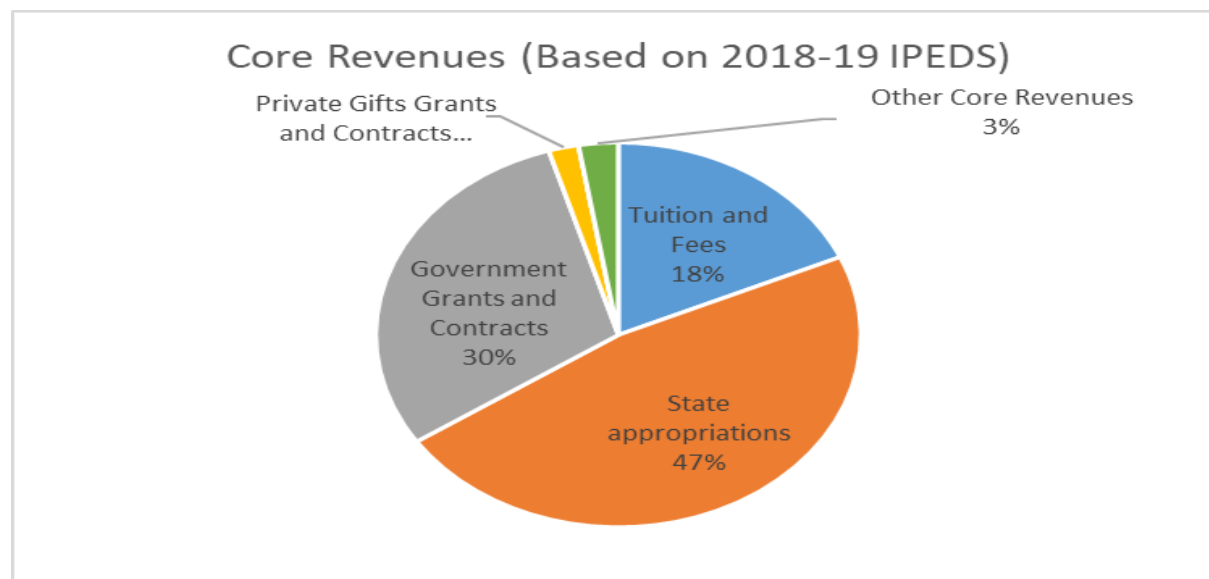
Human Resources Report (As of October 12, 2018)

	Full-Time Staff	Part-Time Staff
Administration	10	0
Staff	106	2

## Budget (Source: 2018-19 IPEDS Finance Report)

Core Revenues (Based on 2018-19 IPEDS)	Total	Per FTE Enrollment
Tuition and Fees	\$4,053,491	\$5,669
State appropriations	\$10,437,600	\$14,598
Government Grants and Contracts	\$6,562,467	\$9,178
Private Gifts Grants and Contracts	\$441,753	\$618
Investment Income	\$0	\$0
Other Core Revenues	\$581,871	\$814

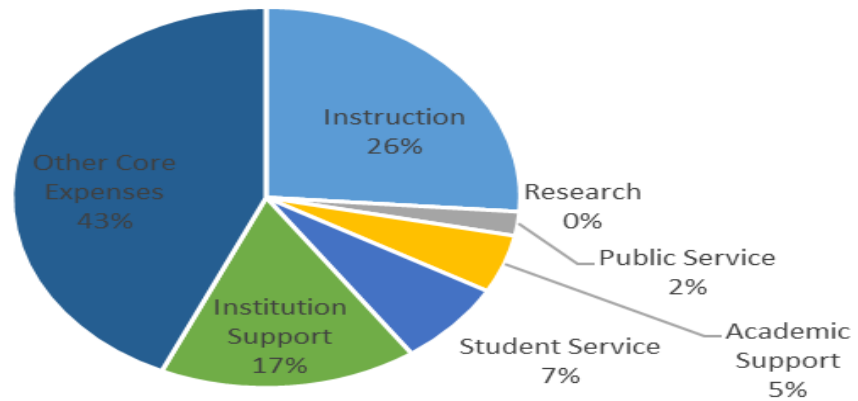
*Other core revenues include federal appropriations; sales and services of educational activities; other operating and non-operating sources; and other revenues and additions (e.g., capital appropriations, capital grants and gifts, etc.). Core revenues exclude revenues from auxiliary enterprises (e.g., bookstores, dormitories), hospitals, and independent operations.*



Core Expenses (Based on 2018-19 IPEDS)	Total	Per FTE Enrollment
Instruction	\$6,248,756	\$8,740
Research	\$0	\$0
Public Service	\$487,384	\$682
Academic Support	\$1,181,361	\$1,652
Student Service	\$1,697,951	\$5,477
Institution Support	\$3,916,324	\$2,375
Other Core Expenses	\$10,322,651	\$14,437

*Other core expenses include scholarships and fellowships, net of discounts and allowances, and other expenses. Core expenses exclude expenses from auxiliary enterprises (e.g., bookstores, dormitories), hospitals, and independent operations.*

### Core Expenses (Based on 2018-19 IPEDS)



### Community Service Offerings and Projects

Sampling of Offerings	Number of participants	Sampling of Special Projects for the Community
Adult Education (AE)	110	The Adult Education Program offers the opportunity for students to take and pass the High School Equivalency exam and obtain what is known as the GED®. AE offers English as a Second Language (ESL) and helps adults to become more literate, improving their educational and employability skills.
Continuing Education	525 (2018)	NNMC Continuing Education offers personal enrichment courses each semester. The CE/CS courses include: Spanish Colonial Wood Working; Spanish Colonial Furniture Making; Weaving; Dancing; ArcView GIS; Serve Safe; Excel; Computer Literacy; Know your retirement, Stocks and Investments, First/CPR.
SBDC	87 Business Clients Served; 147 Jobs Supported; 123 Jobs Created or Saved; 353.64 Counseling Hours w Clients;	SBDCs help Small Business, grow, create and retain jobs. America’s SBDC is a local, national, global business resource. SBDC at NNMC is a national accredited business assistance program offering no-cost business consulting and low-cost business training for all types of business at all stages of business development. Focusing on job creation, growing business, new businesses and economic development. SBDC certified business consultants help provide local businesses and entrepreneurs with the resources they need to thrive compete and succeed and have access to National and International Partners.  4 New Business Starts; 16 Capital Loans & Equity totaling \$2,575,000; 1 Government Contract totaling \$52M; 37 Legislative Visits; 14 Media Exposures (SBDC @ NNMC); 11 Community Presentations.

Sampling of Offerings	Number of participants	Sampling of Special Projects for the Community
High School Equivalency Program (HEP)	80 students per year	<p>The High School Equivalency Program (HEP) helps migrant and seasonal farmworkers (or children of such workers) who are 16 years of age or older and not currently enrolled in school obtain the equivalent of a high school diploma and, subsequently, to gain or upgrade employment, begin postsecondary education or training, or enlist in the military.</p> <p>NNMC's HEP ranked the best in the nation for 2016 and 2017 and was the 3rd highest among 48 HEP programs in 2018. NNMC's HEP achieved an 85% graduation rate (national target being 69% and the national average was 65%). One-hundred percent (100%) of NNMC HEP graduates entered postsecondary education or training, upgraded employment, or the military (national target being 80% and the national average was 83%).</p>

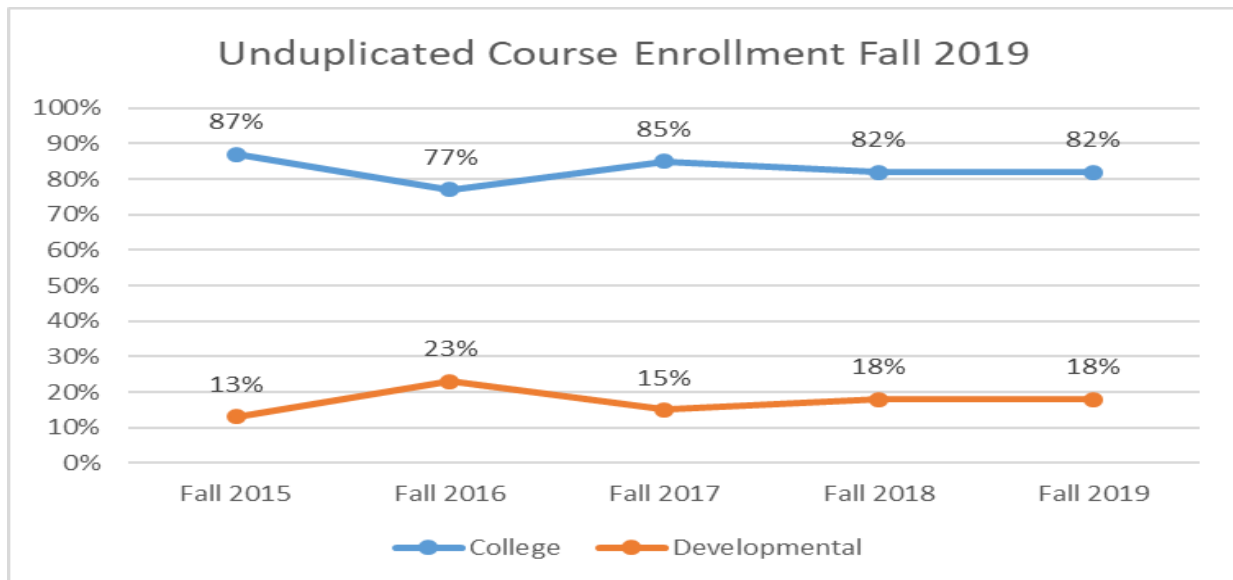
### Developmental Studies

Total Number of FTAC (First time Any College) students, Fall 2019 = 155

- FTAC taking one or more developmental courses: 87%
- FTAC taking developmental Math, Fall 2019: 7%
- FTAC taking developmental English, Fall 2019: 48%
- FTAC taking developmental Math and developmental English, Fall 2019: 32%

Includes: English 111 (which is a gateway course) and Math 130, 145 and 150 (also gateway courses)

### Credit Enrollment

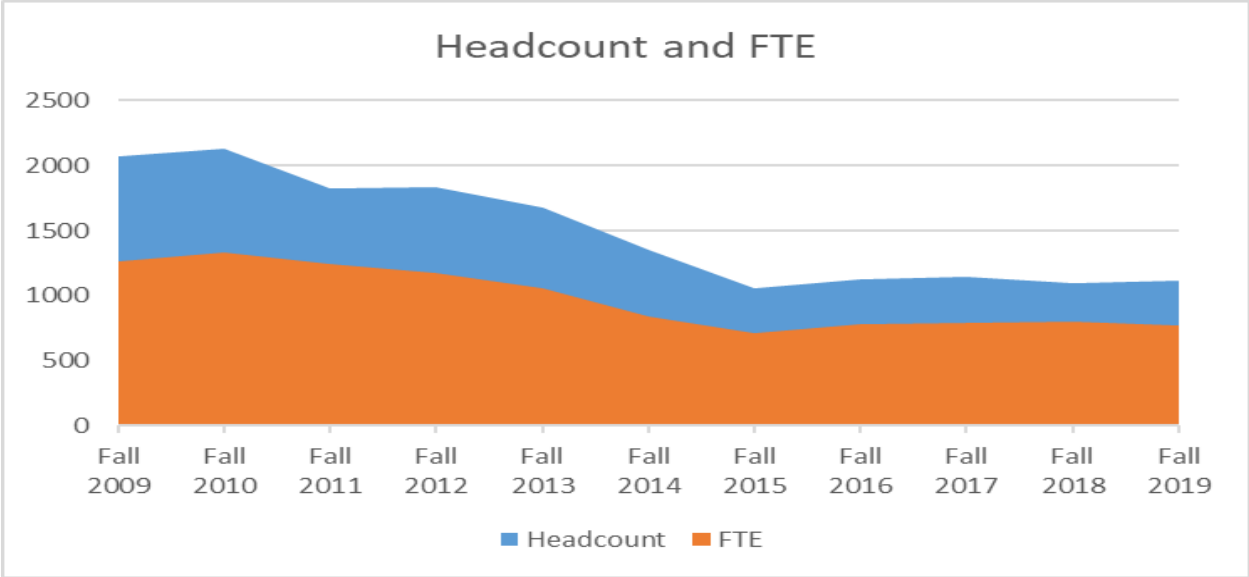


<i>Fall 2019 Census</i>	<i>Information</i>
<b>1120</b>	<b>Student Headcount</b>
<b>11515.00</b>	<b>Student Credit Hours (SCH)</b>
<b>767.7</b>	<b>Full-Time Equivalent (FTE) Students</b>
<b>64%</b>	<b>Female Students</b>
<b>36%</b>	<b>Male Students</b>
<b>8%</b>	<b>Native American</b>
<b>72%</b>	<b>Hispanic</b>
<b>9%</b>	<b>White</b>
<b>2%</b>	<b>Black</b>
<b>9%</b>	<b>Other</b>
<b>53%</b>	<b>Full-Time Students (12 or more credit hours)</b>
<b>47%</b>	<b>Part-Time Students (less than 12 credit hours)</b>
<b>57%</b>	<b>Students with Academic Majors</b>
<b>18%</b>	<b>Students with Career Technical Majors</b>
<b>25%</b>	<b>Students Undecided (includes Dual Credit)</b>
<b>75%</b>	<b>Eligible Students Receiving Financial Aid</b>
<b>12:1</b>	<b>Student/Faculty Ratio</b>
<b>13.7 (Lower Division) 8.2 (Upper Division)</b>	<b>Average Class Size</b>
<b>51</b>	<b>Web-Based/Hybrid Distance Ed. Classes (Fall 2019)</b>
<b>280</b>	<b>Traditional Classes (Fall 2019)</b>

## Enrollment Trends

The headcount shown is the number of students at the end of the fall semester. The 2019 fall semester is only an estimate because this document was developed before the end of the semester. The full-time equivalent (FTE) is computed by taking the total number of credit hours that students are enrolled in during the semester and dividing by 15.

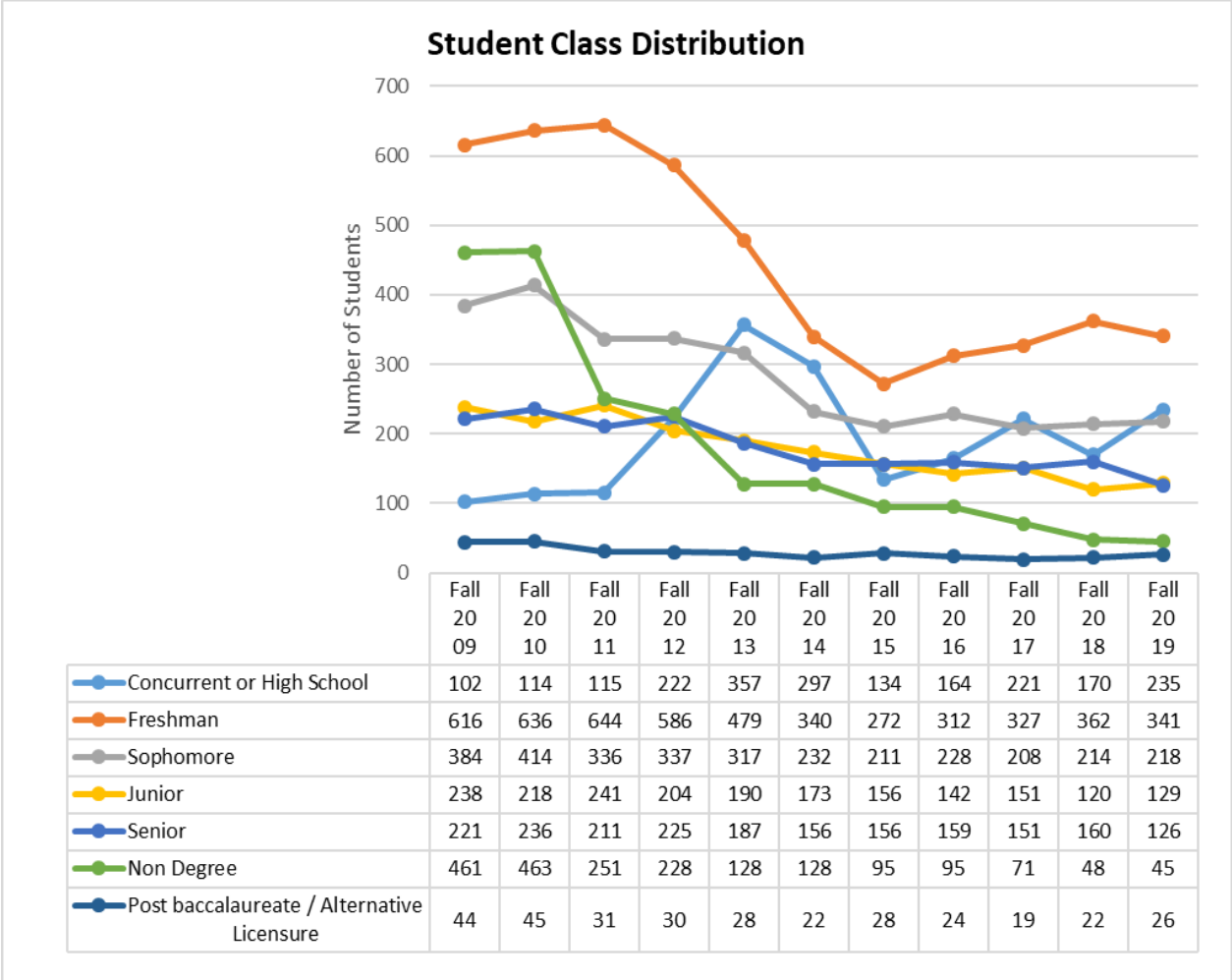
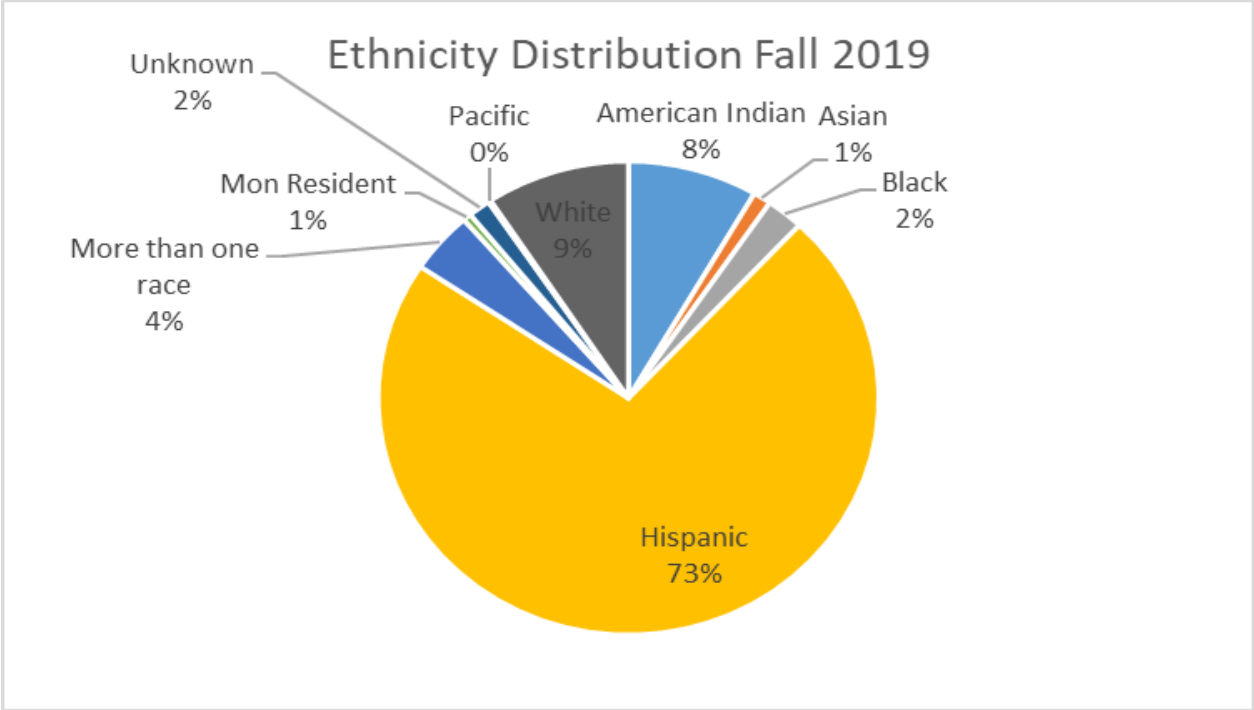




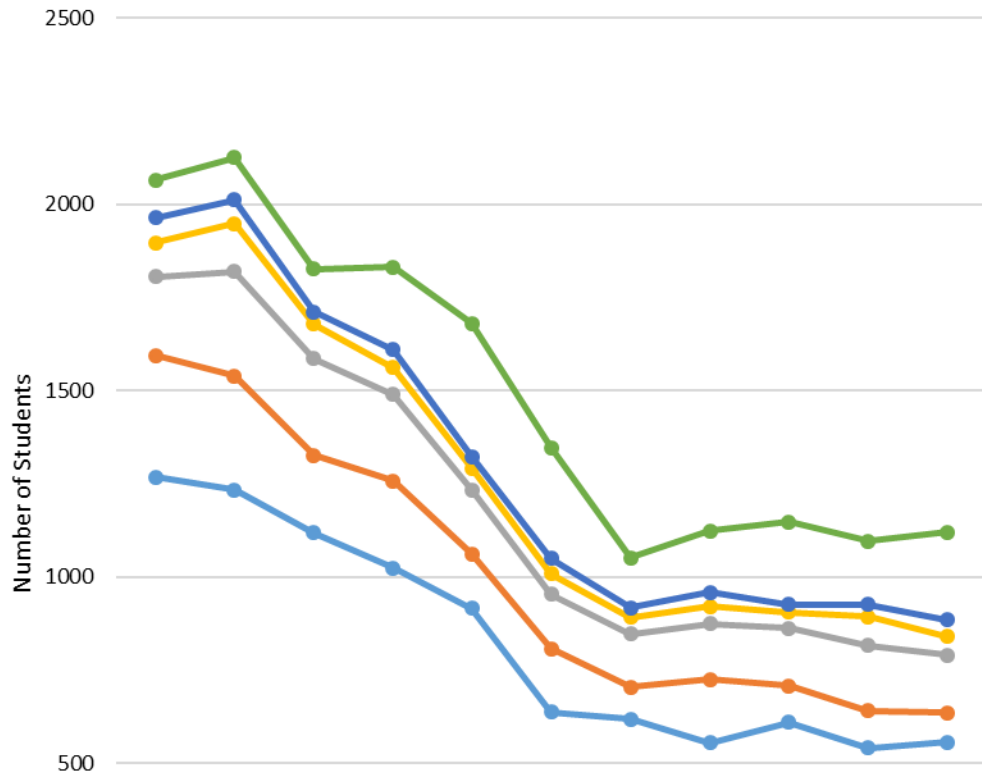
<b>Facts</b>	
<b>Cumulative Fall Headcount Growth Since 2008</b>	<b>-946</b>
<b>Average Fall Headcount Growth Since 2008</b>	<b>-5%</b>

### Characteristics of Students

Age	Fall 2019	Percent
<b>18 or younger</b>	305	27%
<b>18 to 24</b>	436	39%
<b>25 to 30</b>	143	13%
<b>31 to 35</b>	72	6%
<b>36 to 40</b>	54	5%
<b>41 to 45</b>	35	3%
<b>46 to 50</b>	23	2%
<b>51 to 55</b>	17	2%
<b>56 to 64</b>	19	2%
<b>65 and older</b>	16	1%
	1120	100.00%



### Student Admission Type

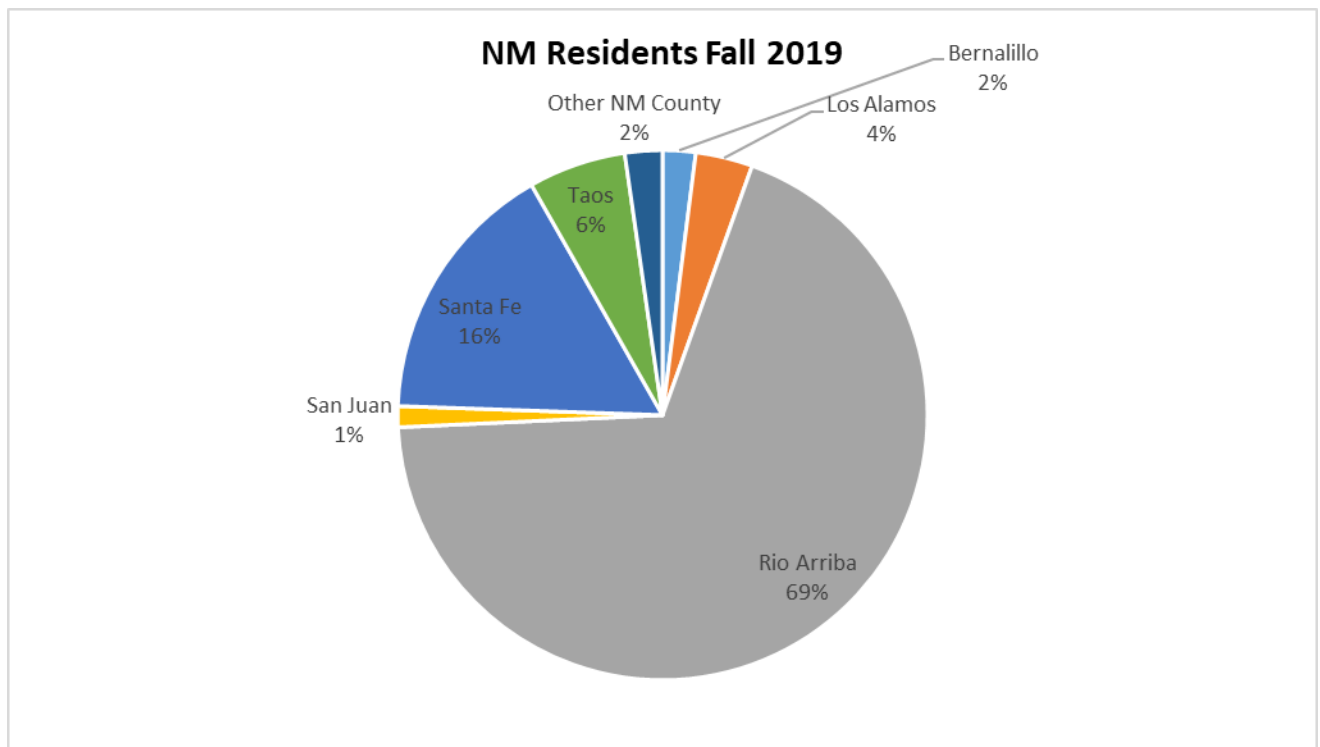


	Fall 2009	Fall 2010	Fall 2011	Fall 2012	Fall 2013	Fall 2014	Fall 2015	Fall 2016	Fall 2017	Fall 2018	Fall 2019
Concurrent Enrollment	102	114	115	222	357	297	134	164	221	170	235
Out of State Transfer	67	63	32	47	31	42	26	39	21	32	44
In State Transfer	90	129	93	72	58	54	45	46	42	77	50
New Student	212	280	259	233	172	146	141	149	156	176	155
Returning Student	326	306	208	234	147	171	86	171	98	99	79
Continuing Student	1269	1234	1119	1024	916	638	620	555	610	542	557

## Residency

Student Residence	Fall 2016	Fall 2017	Fall 2018	Fall 2019
Arizona	4	2	2	4
California	5	3	2	1
Colorado	1	1	1	1
New Mexico	1095	1129	1073	1092
Texas	9	6	10	4
Other	14	10	11	18

NM Residents	Fall 2016	Fall 2017	Fall 2018	Fall 2019
Bernalillo	20	27	23	22
Los Alamos	38	39	35	38
Rio Arriba	708	756	710	751
San Juan	15	10	12	14
Santa Fe	196	201	195	177
Taos	88	68	65	65
Other NM County	30	28	33	25



## High School Recruitment

High School where New Student Graduated From:

	Fall 2016	Fall 2017	Fall 2018	Fall 2019
Capital High	1	0	1	0
Coronado HS	0	2	1	0
Cuba	0	1	1	1
Escalante	1	2	3	0
EVHS	30	50	56	47
GED	44	35	28	42
Los Alamos	3	2	13	2

	Fall 2016	Fall 2017	Fall 2018	Fall 2019
McCurdy HS	8	5	4	10
Mesa Vista	4	5	4	5
Other NM HS	20	19	30	15
Out of Country/Unknown	3	2	2	0
Out of State	5	3	6	10
Penasco	5	0	6	2
Pojoaque	17	22	21	16
Santa Fe High School	2	0	0	1
Santa Fe Indian School	4	6	0	1
Victory Faith Christian Academy	2	2	0	3
Total Number of New Students	<b>149</b>	<b>156</b>	<b>176</b>	<b>155</b>

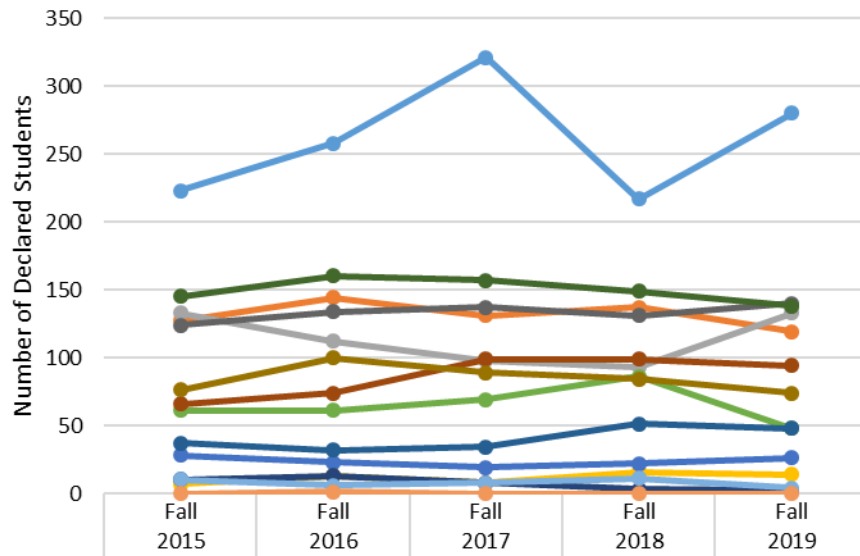
## Degrees and Majors

### Top 20 Majors Declared Fall Term

Major	N
Non-Degree	217
Business Administration	121
Nursing (ADN) AS	72
RN to BSN	68
Information Engineering Tech	60
Psychology	52
Environmental Science	46
Criminal Justice	45
Biology	43
Elementary Education	42
Liberal Arts	34
Cosmetology/Barbering	33
Early Childhood Education	32
Nursing (ADN)	31
Electromechanical Engr Tech	24
Alternative Licensure Program	22
Film and Digital Media Arts	21
Project Management	17
Radiation Protection	16
Accounting	15
General Psychology	11

\*Students declaring this major are not necessarily admitted yet

### Student Declared Degrees



	Fall 2015	Fall 2016	Fall 2017	Fall 2018	Fall 2019
Non Degree	223	258	321	217	280
Associate of Arts	127	144	131	137	119
Associate of Applied Science	133	112	98	93	133
Associate of Engineering	7	13	8	16	14
Alternative Licensure	28	23	19	22	26
Associate of Science	61	61	69	86	48
Bachelor of Arts	37	32	34	51	48
Bachelor of Arts in Integrated Studies	66	74	99	99	94
Bachelor of Business Administration	124	134	137	131	140
Bachelor of Engineering	76	100	89	84	74
Bachelor of Music	10	13	8	3	2